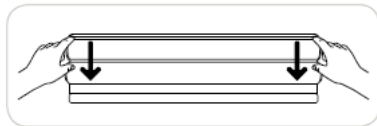


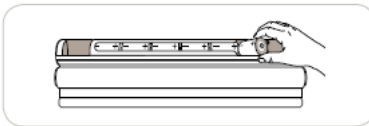
Changing Batteries for Serena Shades

Changing batteries for Serena Shades is easy and quick in thanks to our exclusive headrail and bracket design with no need to remove the shade.

Roller Shades:

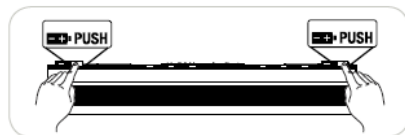


Tip down the headrail.

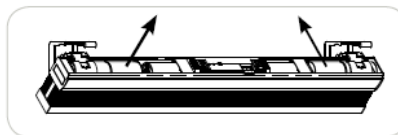


Change the batteries and tip headrail back into place.

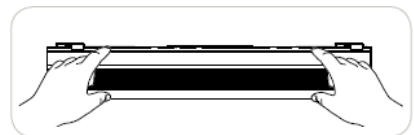
Insulating Honeycomb Shades:



Simply press the release buttons, allowing the headrail to tilt forward.



Change the batteries.



Snap the headrail back into place.